

# INSTRUCTION MANUAL

## SANDWICH GRILL - MODEL: SSGL-85.212.0P446-A

- **PLEASE** read these instructions carefully before operating this appliance.

### SAFETY

- Install your equipment in area well ventilated, to eliminate the gases generated by the combustion.
- It's recommended to leave at least 6 inches (15 cm) of free space around the equipment.
- DO NOT install the equipment next to combustible materials.
- The installation has to comply to the safety standards.

### OPERATION

- The equipment is supplied with a Gas Tap which can adjust the flame (turn 1/4 to maximum flame and turn 1/2 to minimum flame).
- Incorporated to the Tap there is a safety device that will let open the gas only if it is pressed and turned counterclockwise.
- Before using the appliance for the first time, remove the protection coating with a damp cloth, light the burner and allow griddle to heat for +/- 30 minutes. You will notice some smoke appearing due to the protection coating burning, which is normal.
- After 30 minutes heating, adjust the gas tap to operating desired temperature and grease plate, generously with butter or oil. Never allow excess of fat or oil to buildup as this will result in build-up of carbon on the plates, which should be removed with a scraper.
- Appliance is provided with grease drawer that receives grease and food scraped residues.
- This appliance should be preheated before daily operation. Always allow 15 minutes preheat time before loading griddle with food to give griddle surface time to saturate.
- To turn off your appliance turn the gas tap knob completely clockwise.

### CLEANING PROCEDURE

- Always ensure that the gas taps are in off position before cleaning.
- Try to scrape as much grease and residues from cooking surface as possible while the unit is still hot.
- After appliance has cooled, clean cooking surface and body using only a damp cloth. Never use water jet or immerse appliance in water.
- Wipe off appliance with a dry cloth and wait at least half an hour before start operation again.

The pictures/drawings are illustrations. All data can be changed without notification.



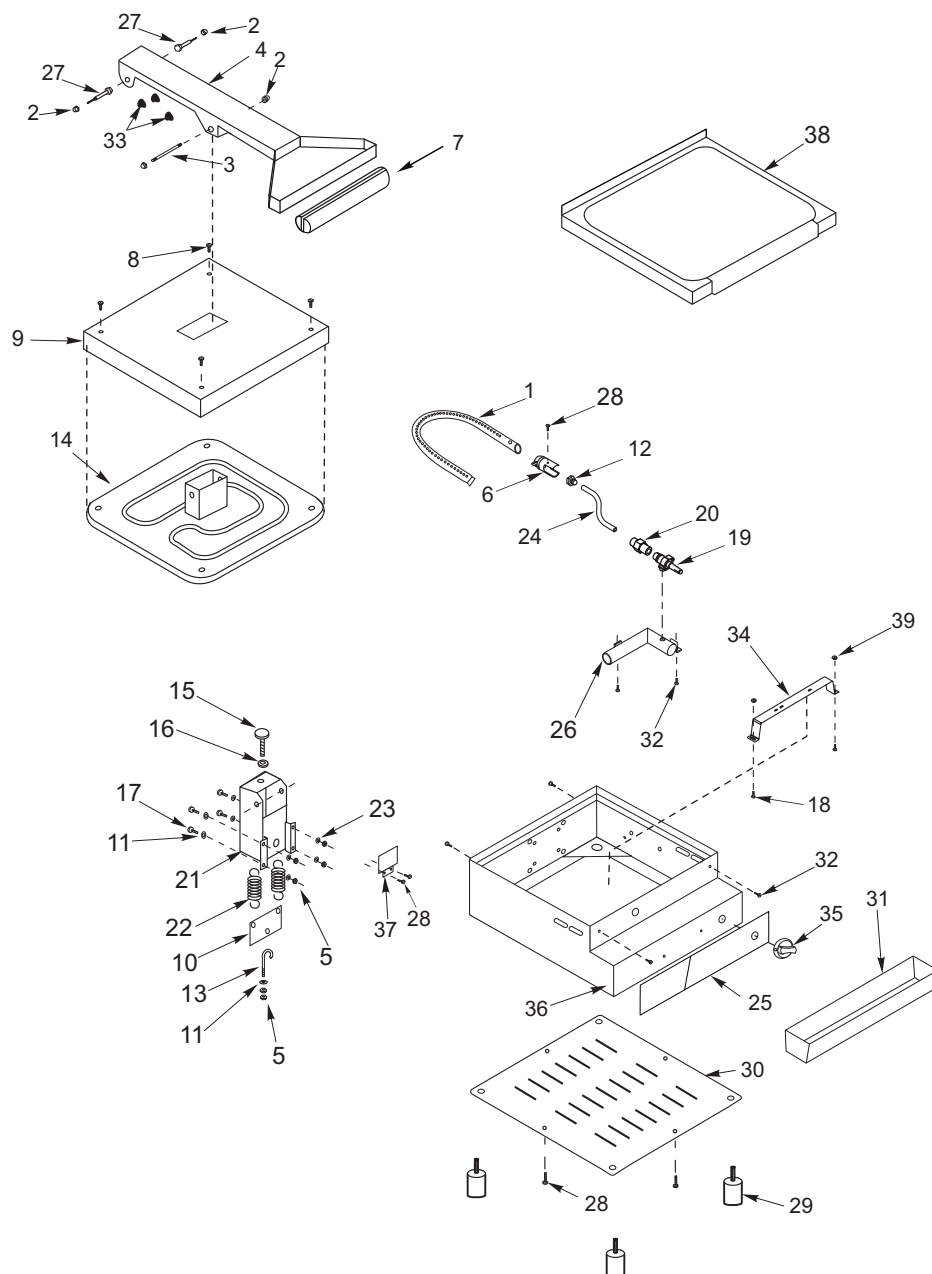
# SSGL-G



## AMERICA PARTS & TOOLS, INC

3705 NW, 115th Ave Unit 8  
Doral, FL 33178  
PH: +1-786-5369960  
email: info@americapartstools.com

SSGL-85.212.0P446-A



## Item Code Description

1	16353-7	Burner
2	00621-7	Nut (1/4")
3	02646-7	Shaft
4	21871-7	Arm
5	00601-7	Nut
6	16076-7	Burner Regulator
7	15000-7	Handle
8	00481-7	Screw (3/16")
9	02648-7	Lid
10	02654-7	Spring Regulator
11	00642-7	Washer (1/4")
12	16487-7	Orifice
13	02631-7	Spring Regulator
14	40025-7	Upper Heating Plate
15	02467-7	Lid Regulator
16	02466-7	Regulator Locker
17	00332-7	Screw (1/4")
18	00385-7	Screw (3/16")
19	16168-7	Gas Tap
20	16237-7	Connection 1/8"
21	21879-7	Arm Support
22	02044-7	Spring
23	00597-7	Locker Washer (1/4")
24	16321-7	Gas Pipe
25	23383-7	Label
26	17157-7	Collector Pipe
27	15024-7	Shaft
28	00552-7	Screw
29	01917-7	Foot
30	02685-7	Bottom Cover Plate
31	17989-7	Grease Collector
32	00566-7	Screw
33	02113-7	Rubber Protection
34	16320-7	Burner Support
35	01965-7	Knob
36	16319-7	Body
37	17821-7	Plate Protector
38	40017-7	Lower Heating Plate
39	00604-7	Nut

## Technical Data

SSGL-85.212.0P446-A	
Power (BTU/h)	15.000
Consumption (g/h)	370
Weight (kg/lbs)	24/53
Dimensions W x H x D (cm/in)	45/17,8 x 30/11,9 x 62/24,5