

INSTRUCTION MANUAL

SANDWICH GRILL - MODEL: SACL-85.212.0P225-A

- **PLEASE** read these instructions carefully before operating this appliance.

SAFETY

- Install your equipment in area well ventilated, to eliminate the gases generated by the combustion.
- It's recommended to leave at least 6 inches (15 cm) of free space around the equipment.
- DO NOT** install the equipment next to combustible materials.
- The installation has to comply to the safety standards.

OPERATION

- The equipment is supplied with a Gas Tap which can adjust the flame (turn 1/4 to maximum flame and turn 1/2 to minimum flame).
- Incorporated to the Tap there is a safety device that will let open the gas only if it is pressed and turned counterclockwise.
- Before using the appliance for the first time, remove the protection coating with a damp cloth, light the burner and allow griddle to heat for +/- 30 minutes. You will notice some smoke appearing due to the protection coating burning, which is normal.
- After 30 minutes heating, adjust the gas tap to operating desired temperature and grease plate, generously with butter or oil. Never allow excess of fat or oil to buildup as this will result in build-up of carbon on the plates, which should be removed with a scraper.
- Appliance is provided with grease drawer that receives grease and food scraped residues.
- This appliance should be preheated before daily operation. Always allow 15 minutes preheat time before loading griddle with food to give griddle surface time to saturate.
- To turn off your appliance turn the gas tap knob completely clockwise.

CLEANING PROCEDURE

- Always ensure that the gas taps are in off position before cleaning.
- Try to scrape as much grease and residues from cooking surface as possible while the unit is still hot.
- After appliance has cooled, clean cooking surface and body using only a damp cloth. Never use water jet or immerse appliance in water.
- Wipe off appliance with a dry cloth and wait at least half an hour before start operation again.

The pictures/drawings are illustrations. All data can be changed without notification.



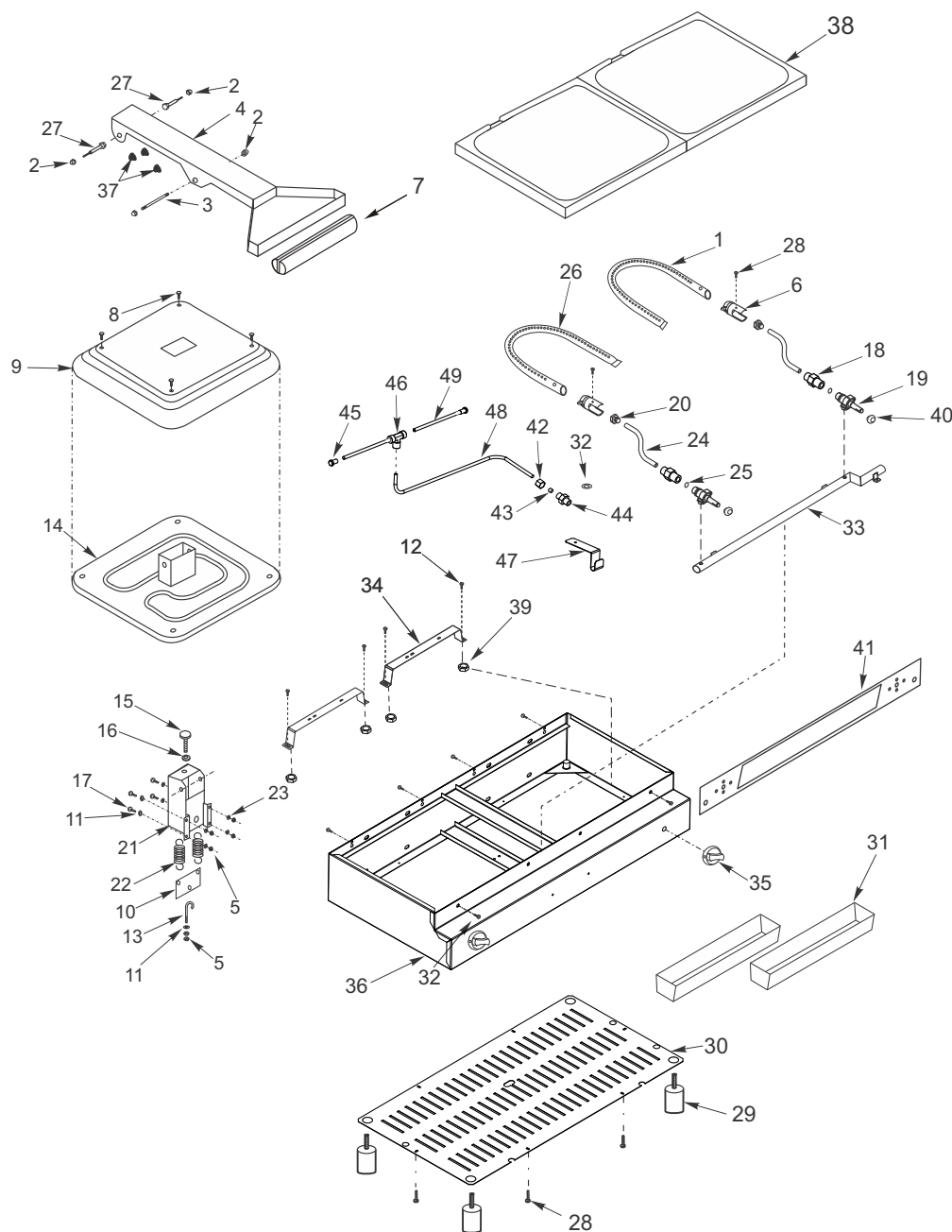
SACL-G



AMERICA PARTS & TOOLS, INC

3705 NW, 115th Ave Unit 8
Doral, FL 33178
PH: +1-786-5369960
email: info@americapartstools.com

SACL-85.212.0P225-A



Item Code Description

1	16.074-3	Burner
2	621	Nut (1/4")
3	2.646-3	Shaft
4	21.868-3	Arm
5	601	Nut 1/4"
6	16.076-3	Burner Regulator
7	15.000-3	Handle
8	570	Screw 3/16"
9	2.032-3	Lid
10	2.654-3	Spring Support
11	642	Washer 1/4"
12	385	Screw 3/16"
13	2.631-3	Spring Regulator
14	40.023-3	Upper Heating Plate
15	2.467-3	Lid Regulator
16	2.466-3	Regulator Locker
17	332	Screw 1/4"
18	16.237-3	Connection 1/8"
19	16.165-3	Gas Tap
20	16.243-3	Orifice
21	21.875-3	Arm Support
22	2.044-3	Spring
23	597	Locker Washer (1/4")
24	16.333-3	Gas Pipe
25	16.217-3	Tube Seal
26	16.164-3	Buner
27	15.024-3	Shaft
28	552	Screw
29	1.917-3	Foot
30	16.269-3	Bottom Cover Plate
31	17.958-3	Grease Collector
32	510	O Ring
33	17.156-3	Collector Pipe
34	16.334-3	Buner Suport
35	21.288-3	Knob
36	16.340-3	Body
37	2.113-3	Rubber Protection
38	40.024-3	Lower Heating Plate
39	604	Nut 3/16"
40	18.004-3	Nut 1/4"
41	22.900-3	Label
42	22.008-3	Nut
43	22.009-3	Metal Ring
44	22.010-3	Pilot Valve
45	22.012-3	Pilot Burner
46	17.160-3	"T" Connection
47	17.232-3	Pilot Support
48	17.161-3	Connection Pipe
49	17.162-3	Pillot Pipe

Technical Data

SACL-85.212.0P225-A	
Power (BTU/h)	18.000
Consumption (g/h)	450
Weight (kg/lbs)	18,5/40,7
Dimensions W x H x D (cm/in)	73,4/28,9 x 36,2/14,3 x 49,5/19,5